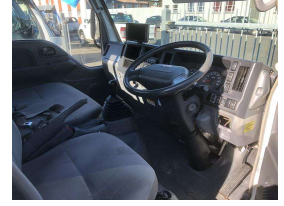


2008 Isuzu ELF Flatdeck Taillift



VEHICLE INFORMATION

Cash Price

Includes GST,
Registration &
Licensing

\$29,845

Finance this vehicle
from only

\$234.95

per week*

Total Amount Payable

\$36,651.49



Gain peace of mind
with Mechanical
Breakdown Insurance.
Ask us how.

Body

2 door, Truck - Flat deck

Odometer

211,216 km

Engine

2990 cc, Diesel Turbo

Fuel Type

Diesel

Transmission

5 Speed Manual

Wheels

-

VIN

7AT09716X18001196

Reg No.

MUT503

Ext Colour

White

History

Ex-Overseas

Seats

3 seats

Interior

-

Audio

-

Stock ID

1288

Exterior Features

- » 4WD
- » 4x4
- » 600kg Tail Lift
- » Drop Sides
- » Manual
- » Tail Lift

Interior Features

- » Air Conditioning
- » Drivers Airbag
- » Electric Windows
- » Power Steering
- » Reversing Camera

Mechanical Features

- » Exhaust Brakes
- » Power Tail lift



Kobe Commercial, Phone 06 833 7150, Email sales@kobe.co.nz
20 Owen Street, Napier South, Napier 4110, New Zealand
www.kobe.co.nz

* Finance calculation based on a 156 week term, no deposit and with an example annual fixed interest rate of 12.95%. Actual interest rate may be higher or lower. Includes an establishment fee of \$495.00. Full term total amount payable of \$36,651.49. Estimate only, not an offer of finance. Terms, conditions and lending criteria apply.